



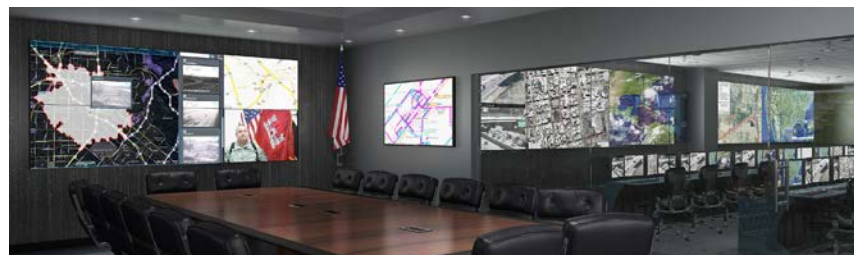
## CineView III LCD Video Walls

Haivision MCS offers a full selection of high-performance LCD video walls. Our CineView III LCD video wall series is our next generation of LCD display technology and delivers unparalleled brightness, visual performance, and reliability.

Offering ultra-narrow bezels and a thin-profile design, CineView III LCD displays create an immersive display platform for your content. Developed for mission-critical operations, CineView III LCD video walls are 24/7 reliable and offer extreme longevity and value.



Haivision CineView III LCD video walls feature the narrowest bezels and slimmest installation depths. They are available in a 55" display size with screen-to-screen bezel widths as narrow as 0.88 mm, 500 or 700 nits brightness levels, various mounting options, and premium options such as touch technology, ruggedized glass, and a fiber optic video extender.



## DISPLAY CHARACTERISTICS PROVIDE AN IMMERSIVE AND VISUALLY STUNNING EXPERIENCE

- Brilliant visual images
- Screen-to-screen bezel width as low as 0.88 mm
- Standard and high brightness options
- Advanced color and brightness matching
- 4K60 video input supported
- Native Cat6 and Fiber video inputs supported
- Interactive touch technology\*

## ELECTRONICS DEVELOPED FOR SERVICEABILITY, SECURITY, AND ENVIRONMENTAL FACTORS

- Rack-mounted power supply and graphics processor
- Hot-swappable power supply
- Easily serviceable, front-access LCD display
- Fiber optic extender\*
- HDCP compliant

\*Optional

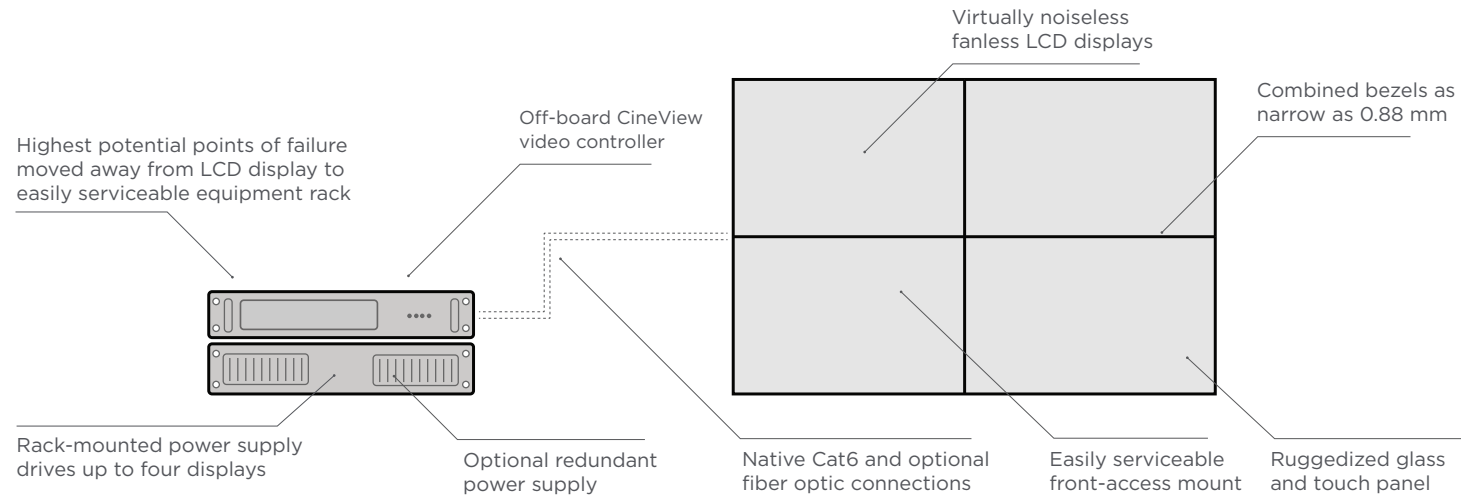
## ENGINEERED FOR MISSION-CRITICAL APPLICATIONS

- Certified 24/7/365 operation
- 150,000+ hour MTBF for electronics
- Redundant power supply\*
- 24/7 remote and onsite GuardianCare support\*
- Diagnostic feedback and reporting
- Three-year warranty, extendable to four or five years

## MECHANICAL DESIGN OPTIMIZED FOR WEIGHT, SPACE REQUIREMENTS, INSTALLATION, AND SERVICE

- Ultra-lightweight
- Extremely low profile as low as 3.6" - ADA compliant
- Front-serviceable
- Simple alignment system
- Fanless operation at display
- Wall, floor, free-standing, and curved mounting

## The next generation of LCD technology



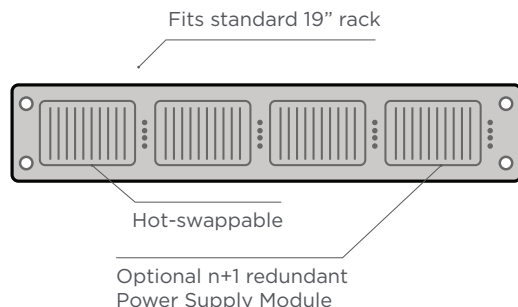
CineView III LCD video walls are designed and developed by video wall experts and are purposefully engineered to address the difficulties encountered in typical LCD video wall installations – mounting and alignment, serviceability, intuitive and flexible control, performant image processing, and 24/7 reliability.

The CineView III LCD's advanced design isolates the power supply and video processing – the highest potential points of failure due to heat and electronics complexity – from the LCD display, locating them in an easily accessible and serviceable equipment rack.

- Next-generation LCD video wall system
- Combined bezel width as low as 0.88 mm
- 4K input at up to 60Hz supported
- Mission-critical design for reliability and 24/7 operation
- Precise alignment
- Thinnest profile in the industry
- Simplified content management through CineNet
- Options include: protective glass, interactive touch, fiber optic extension module, redundant power supply, 4- or 5-year extended warranty, and 24/7 remote and on-site GuardianCare support
- Native Cat6 and Fiber video inputs



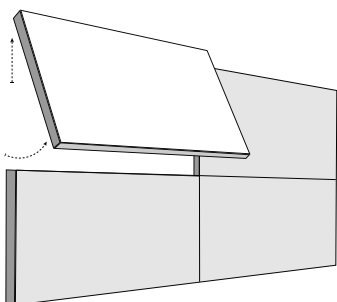
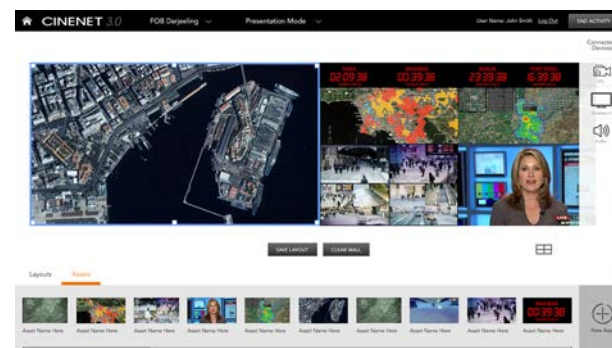
## Designed for reliability and 24/7 operation



Reliability of CineView III LCD video walls is best-in-class. Designed to meet the most extreme requirements for up-time and round-the-clock use, CineView III LCD video wall power supplies are housed in an equipment rack remote from the wall and are hot-swappable to avoid service disruption. The electronics of each display has a mean time between failure (MTBF) of over 150,000 hours (or 17+ years).

For an extra degree of security in applications involving highly sensitive information, Haivision's CineView III fiber optic extender can be deployed, providing a tamper-proof signal and a greater distance between the CineView III LCD video wall and the CineView Video Controller.

The content on CineView displays is controlled using our Command 360 visual collaboration platform or CineNet platform, depending on your organization's preference. Users with advanced permissions can exercise complete control over the content displayed on the CineView III LCD video wall using a browser-based, drag & drop interface. The software platforms can also be configured to provide non-technical users with an ultra-simplified interface to complete a complex series of pre-built tasks with the touch of a button.



CineView III LCD video walls are designed to simplify mounting and alignment with a unique mounting system that allows for precise alignment and meets ADA requirements with an extremely low profile depth from the wall (as low as 3.6").

Serviceability is maximized with the CineView III's rack-mounted power supply and video controller, allowing service without requiring access to the video wall and causing operational disruption. The equipment rack for the video wall's power supply and video controller can be located up to 200 feet from the video wall, enhancing room design flexibility while eliminating the need for costly extender cables. The CineView III LCD displays are front-access, so they do not need to be removed from the wall for maintenance.

	CINEVIEW III LCD 55” 1.8 MM, 500 NITS	CINEVIEW III LCD 55” 1.8 MM, 700 NITS	CINEVIEW III LCD 55” 0.88 MM, 500 NITS	CINEVIEW III LCD 55” 0.88 MM, 700 NITS
LCD DISPLAY				
VIEWABLE IMAGE SIZE (DIAGONAL)	55 in			
PIXEL PITCH	0.63 mm			
COMBINED BEZEL SIZE	1.8 mm	1.8 mm	0.88 mm	0.88 mm
BRIGHTNESS	500 nits	700 nits	500 nits	700 nits
CONTRAST RATIO	1100:1			
CONTRAST RATIO - DYNAMIC	3000:1			
FINISH/HAZE	28%			
BACKLIGHT TYPE	LED			
BACKLIGHT TIME TO HALF-BRIGHTNESS	50,000 hr			
NATIVE RESOLUTION	1920 x 1080			
DISPLAYABLE COLORS	16.7 million			
ASPECT RATIO	16:9			
FULL VIEWING ANGLE	178°			
ACOUSTIC NOISE	Fanless at display			
CONNECTIVITY				
VIDEO INPUTS	(4) HDMI 2.0 (with HDCP 2.2), (1) DisplayPort 1.2 (Cat 5/6/7 to display from equipment rack)			
VIDEO EXTENSION	Native Cat 5/6/7 up to 200 ft			
MAX VIDEO INPUT RESOLUTION	3840 x 2160 @ 60Hz (Can drive 4 displays at full native HD resolution)			
CONTROL	RS-232, IR, Command 360, CineNet, and third-party control compatible			
ELECTRICAL & OPERATIONAL				
POWER CONSUMPTION, MAX (WATTS)	160/display	215/display	235/display	
BTU (MAX)	546 BTU/hr	734 BTU/hr	802 BTU/hr	
VOLTAGE RANGE	100-240V AC, 50-60 Hz, auto-ranging			
OPERATING TEMPERATURE	41° to 104° F			
RACK-MOUNT POWER SUPPLY	Yes			
REDUNDANT POWER SUPPLY	Optional			
MOUNTING	Front-service mount or VESA mount			
RUN-TIME RATING	24/7/365			
MTBF - LCD PANEL ELECTRONICS	150,000+ hours			
MTBF - POWER SUPPLY MODULE	400,000+ hours			
MTBF - VIDEO CONTROLLER MODULE	300,000+ hours			
MEMORY, CONTENT RETENTION	Memory is volatile, all onscreen content lost within seconds of power loss			
STATUS REPORTING & DIAGNOSTICS	LED status indicators, onscreen alerts, software alerts via RS232, LAN			

	CINEVIEW III LCD 55” 1.8 MM, 500 NITS	CINEVIEW III LCD 55” 1.8 MM, 700 NITS	CINEVIEW III LCD 55” 0.88 MM, 500 NITS	CINEVIEW III LCD 55” 0.88 MM, 700 NITS
PHYSICAL				
DIMENSIONS (WALL MOUNTED) (W X H)	47.7 x 26.8			
WEIGHT (WITH WALL MOUNT)	51 lb		47 lb	
SHIPPING WEIGHT	102 lb (2 to a pallet)		94 lb (2 to a pallet)	
SHIPPING DIMENSIONS (W X H X D)	1100:1			
MOUNTED DEPTH	1100:1			
ORIENTATION	3000:1			
TOUCH TECHNOLOGY	28%			
REGULATORY COMPLIANCE	LED			
WARRANTY				
STANDARD WARRANTY	3 Years			
EXTENDED WARRANTY OPTIONS	4 or 5 years, available at initial purchase			
GUARDIANCARE COVERAGE	Optional			
OPTIONS				
FIBER OPTIC EXTENSION MODULE OPTION	1 RU rack mount module drives up to 4 displays			
FIBER VIDEO EXTENSION MODULE OUTPUTS	10G Duplex LC SFP+ single mode transceivers			

## READY TO GET STARTED?

Speak to one of our experts.

[CONSULT WITH AN EXPERT](#)

HAIVISION IS TRUSTED BY ORGANIZATIONS WORLDWIDE



SCHEDULE A LIVE DEMO

1.844.891.6090

[sales@haivisionmcs.com](mailto:sales@haivisionmcs.com)